



### REQUIREMENTS


The MA20 requires these items to work with the nVision Chassis and CrystalControl:

- CrystalControl 1.2 or later
- nVision Chassis firmware R080005 or later
- Switch Test Setup

**Note:** Conduct the Switch Test Setup every time you use the MA20 with a new nVision chassis.

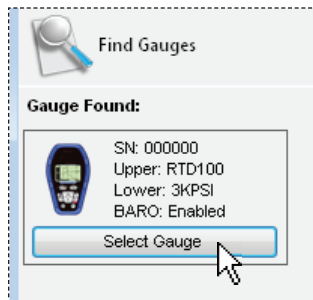
### INSTALLATION

#### ► Install the MA20 module.

- 1 Disconnect the nVision USB cable.
- 2 Remove the 4AA battery module.
- 3 Insert your MA20 into your nVision Chassis in the desired bay and fasten it in place with the included screws.
- 4 Reinstall the 4AA battery module and turn on your nVision with the  (Power) button.
- 5 Reconnect the nVision USB cable to the nVision chassis and then to your PC.

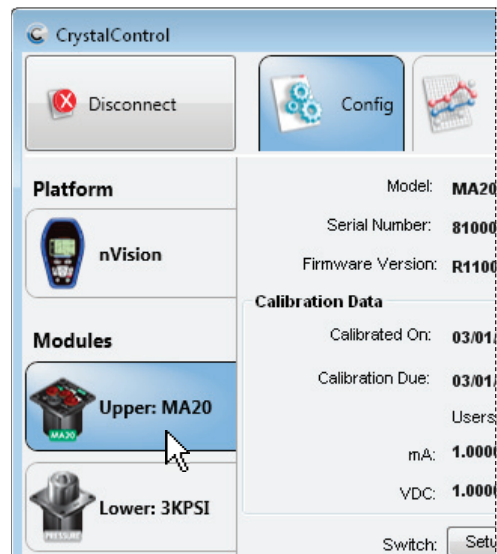
► Open CrystalControl

- Click the **Select Gauge** button.

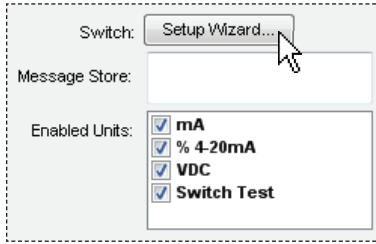


► Switch Test Setup

- 1 Click to select the MA20 Module from the left side tabs.



2 Click the **Setup Wizard** button.



3 Install your Red and Black test leads into the Switch Test locations as shown in the wizard. Ensure that the leads are not connected together forming a closed circuit.

4 Press **Start**. The application will survey the circuit in the open state.

5 When prompted by "Waiting for switch to close...", connect the red and black test leads together creating a closed circuit. The application will survey the circuit in the closed state.

6 Select **Finished**.

7 Update your Gauge by selecting the **Update Gauge** button.



Your nVision with MA20 is fully functional and ready to use.



© 2013 Crystal Engineering Corporation

708 Fiero Lane, Suite 9, San Luis Obispo, California 93401-8701

---

