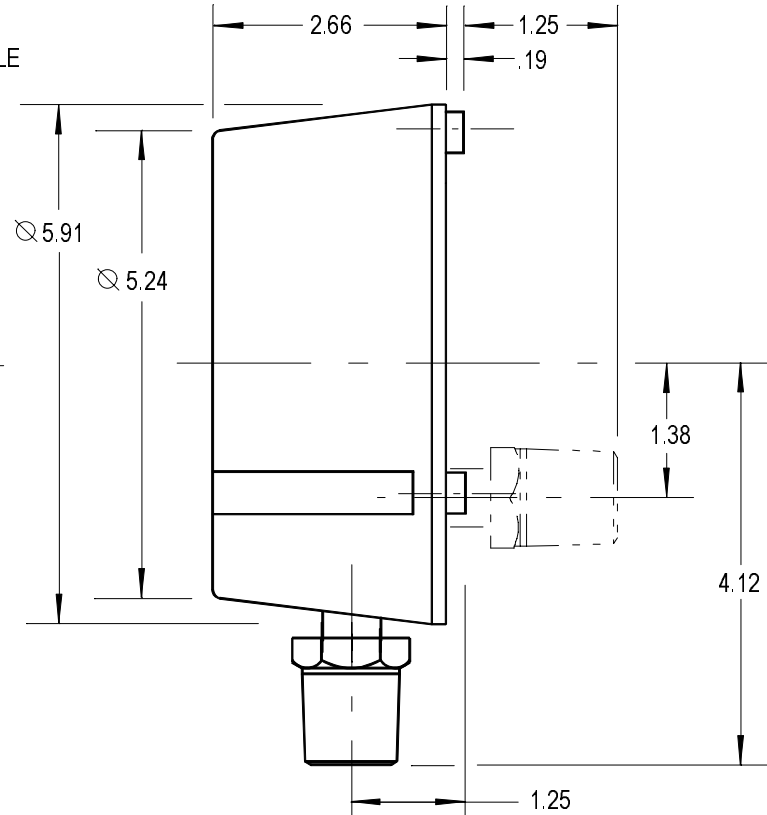
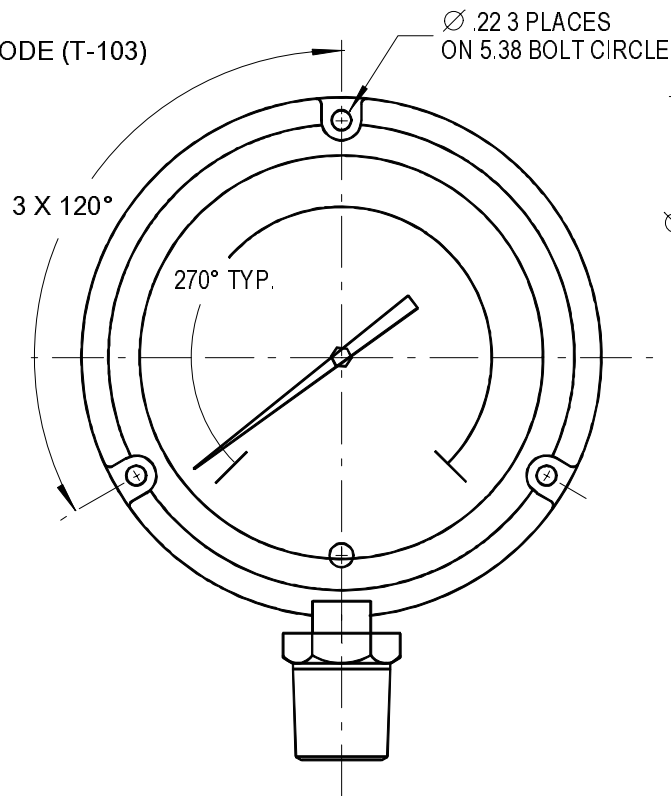


NOTES:

REF. BUL. 100 & T-103 FOR THE FOLLOWING:

- b - ACCURACY CODE
- e - POINTER TYPE
- f - DIAL TRIM
- gg - PRESSURE RANGE CODE (T-103)
- h - CASE COLOR
- i - FITTING LOCATION
- j - FITTING TYPE
- k - OPTIONS



REVISIONS			
REV	DESCRIPTION	DATE	APPROVED

UNLESS OTHERWISE SPECIFIED DIMENSIONS ARE IN INCHES		MATERIAL:		CONTRACT NO.		PERMA-CAL INDUSTRIES, INC.				
CASE - ABS OR GFN FITTING - 316 CRES COIL - INCONEL X-750		DATE		5/22/2007						TURRET GAUGE, 4 1/2"
ANGULAR ± 0° 30'	LINEAR .XX ± .030	CORNER AND FILLET RAD. .005-.015 REMOVE ALL BURRS		PREP BY	REH	SIZE A		CODE IDENT NO. 59018	DRAWING NO. 1b1Tefgghij-k	
FRACTIONAL ± 1/16		DIAMETERS ON SAME C/L RUNOUT WITHIN _____ FIR		CHECK		SCALE 1 : 2		WEIGHT .95 lbs nom	SHEET 1	OF 1
FINISH:		USED ON: INDUSTRIAL GAUGES		PROJ ENGR		FILE NAME: 1b1Tefgghij				
SURFACE ROUGHNESS USAS B46.1										