



KANOMAX

Handheld LPC Data Retrieval Software for Windows MODEL S388-70 Operation Manual

Read this manual carefully and understand the warnings
described in this manual before operating the product.
Keep this manual handy for ready reference.

Kanomax Japan, Inc.



02001

2007.01

NOTICE:

1. The copyright of this software belongs to Kanomax Instrument (Shenyang) Ltd.
2. Any unauthorized duplication of the product, in whole or in part, without written consent from Kanomax Inc. is strictly prohibited.
3. Purchase of one set of software per computer is required.
4. Contents of the Operation Manual are subject to change without notice.

Table of Contents

| | |
|--|----|
| 1. Connecting the Handheld LPC with a Computer | 4 |
| 1.1 Handheld LPC Settings | 4 |
| 1.2 Connecting with a Computer | 6 |
| 1.3 Software Operating Requirements | 6 |
| 2. Software Installation | 7 |
| 3. Operation | 9 |
| 3.1 Program Startup | 9 |
| 3.2 Transferring Data from the Handheld LPC..... | 10 |
| 3.3 Saving Data..... | 11 |
| 3.4 Printing Data..... | 13 |
| 3.5 Setting Time/Date of the Handheld LPC | 14 |
| 3.6 A change of an Handheld LPC type | 15 |
| 3.7 Closing the Software Program..... | 15 |
| 4. Warranty and After Service | 17 |
| 5. Contact Information | 18 |

1. Connecting the Handheld LPC with a Computer

This software Operation Manual describes the method of transferring the data stored in the Handheld Laser Particle Counter (LPC) Model 3887 to a personal computer (hereinafter “computer”), and storing the data in a CSV format.

1.1 Handheld LPC Settings

1) UPLINK Mode Setting

To transfer the data stored in the Handheld LPC to a computer by using the software, the Handheld LPC must be set to the UPLINK Mode.

| Display Screen | Key Operation | Description |
|---|---------------|---|
| <div><MENU></div> <div>1. MEASURE MODE</div> <div>2. DATA PROCESSING</div> <div>3. OPTIONS</div> <div>↓</div> | POWER | Turn on the power by pressing the POWER key. |
| | ENTER | Proceed to the <MENU> screen by pressing the ENTER key. |
| | ▲ ▼ ENTER | Select “2. DATA PROCESSING”. |
| <div>< DATA PROCESSING ></div> <div>RECORDS 00139</div> <div>1.DISPLAY 3.PRINT</div> <div>2.UPLINK 4.CLEAR</div> <div>↓</div> | ▲ ▼ ENTER | Proceed to the <DATA PROCESSING> screen by pressing the ENTER key. |
| | | Select “2. UPLINK”. |
| <div>DATA UPLINK 09:23</div> <div>WAIT...</div> | | Read in data by using the software. |

Fig. 1-1 Instrument Setting

2) Confirm the Handheld LPC Communication Address

Confirm the Handheld LPC communication address by the following procedures.

| Display Screen | Key Operation | Description |
|---|---------------|---|
| <div><MENU></div> <div>1. MEASURE MODE 2. DATA PROCESSING 3. OPTIONS</div> <div>↓</div> <div><OPTIONS></div> <div>1.ALARM 4.HOTKEY 2.UNIT 5.AUTOSTAR. 3.UTILITY</div> <div>↓</div> <div><SYSTEM></div> <div>1.DATE 2005/03/28 2.TIME 14:25 3. ID 05</div> <div>↓</div> <div><UTILITIES></div> <div>4.COMMUNICATION RS232C</div> | POWER | Turn on the power by pressing the POWER key. |
| | ENTER | Proceed to the <MENU> screen by pressing the ENTER key. |
| | ▲ ▼ | Select “3. OPTIONS”. |
| | ENTER | Select “3. UTILITY”. |
| | ▲ ▼ | Proceed to the <OPTIONS> screen by pressing the ENTER key. |
| | ENTER | Select “3. UTILITY”. |
| | ▲ ▼ | Confirm that the “3. ID” is set to “00”. If it is set to any other value, change the value to “00” by using the ▲ ▼ key. |
| | ENTER | |
| | | Confirm that the “4. Communication” is set to “RS232C”. If “RS485” is selected, change it to “RS232C” by using the ▲ ▼ key. Press the PREV key to return to the <MENU> screen. |

1.2 Connecting with a Computer

Connect the instrument with a 9 pin COM port of the Computer.

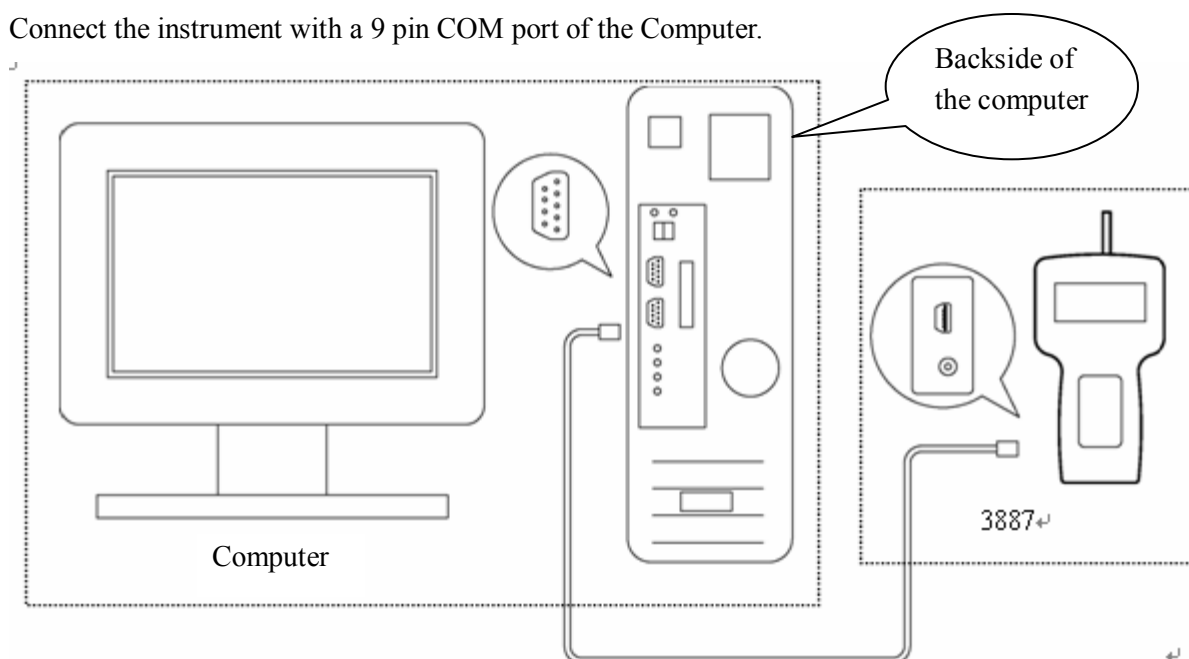


Fig. 1-2 Hardware Connection Diagram

1.3 Software Operating Requirements

| Item | Condition | |
|-----------------------|-------------------------------------|--------------|
| OS | Microsoft Windows 2000 Professional | |
| | Microsoft Windows XP Home Edition | |
| | Microsoft Windows XP Professional | |
| Language | English or Japanese | |
| Communication Setting | Item | Condition |
| | COM port | COM1 to COM8 |

Operating Requirements:


| | |
|-----------------------|--|
| CPU | Pentium-4 300MHz or higher |
| Interface | COM port × 1 |
| Operating System | Microsoft Windows 2000 Professional, Microsoft Windows XP Home Edition, or Microsoft Windows XP Professional |
| Memory Capacity | 128MB or more |
| Required HDD Capacity | 50MB or more |
| Display | Resolution of 800*600 or higher, 32 colors |

[Caution]

Please note that this software is provided exclusively for the Handheld LPC. It cannot be used for any other model.

2. Software Installation

- 1) Before installing the software, shut down (exit) all operating application programs.

Insert the installation CD into the CD-ROM drive, select the “Handheld LPC Data Retrieval Software” folder, and double click the installation icon  “Setup.exe”.

(Note: If an old version of this software is already installed in the computer, please make sure to uninstall the old version before installing the new version.)

- 2) After a few seconds, the installation will start automatically, and the window shown in . 2-1 will be displayed.

Click the “OK” button to proceed to the installation window shown in Fig. 2-2.

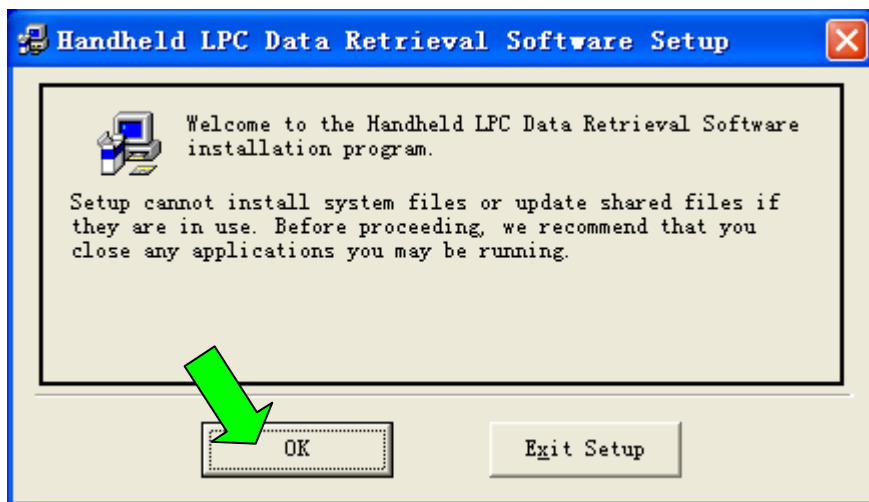


Fig. 2-1

- 3) The following window is to confirm the destination directory to save the software.
To proceed with the default directory, click the installation starting icon.

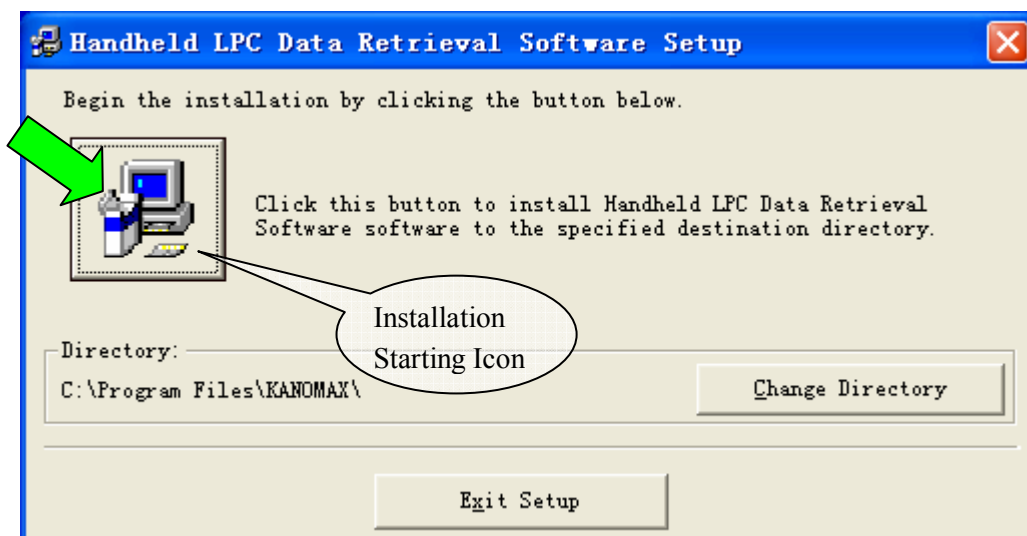


Fig. 2-2

- 4) Select the Program Group for installing the software. By default, a program group called “Kanomax” will be created. To proceed with the default setting, click the “Continue” button, and the installation will start.

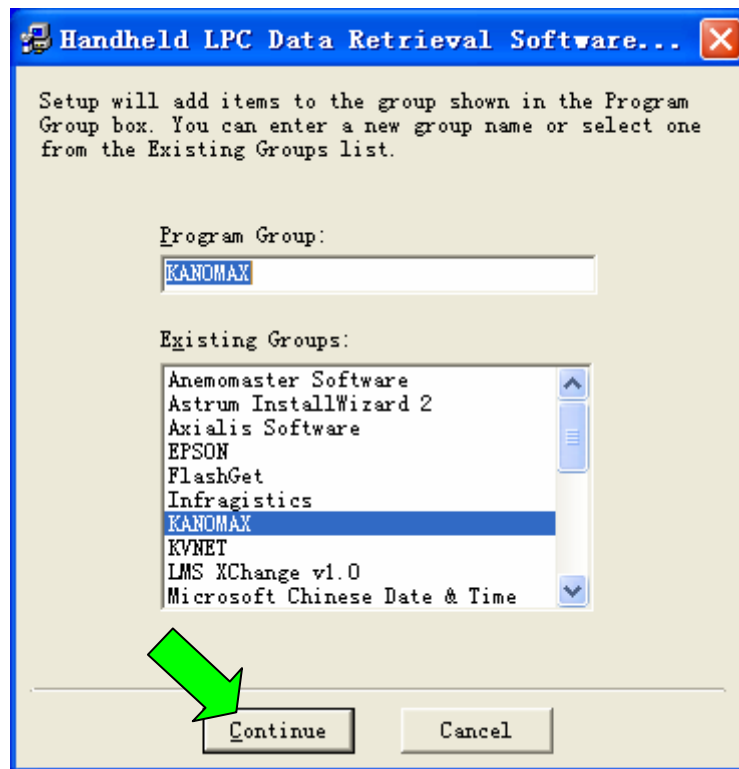


Fig. 2-3

- 5) The following window will be displayed while the installation is in progress.

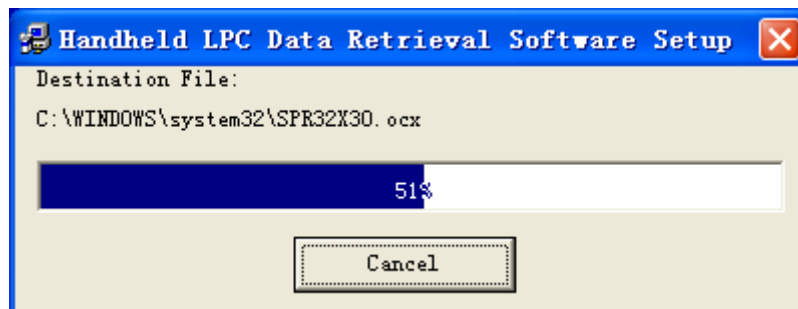


Fig. 2-4

- 6) When installation is completed properly, the following window will be displayed. Click the “OK” button to close the window.

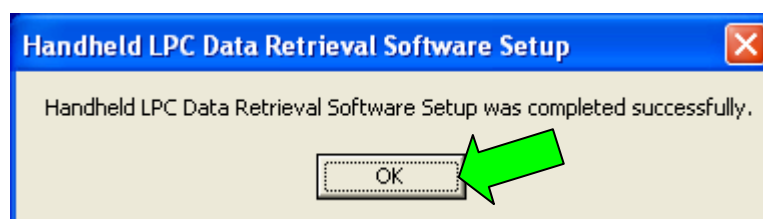


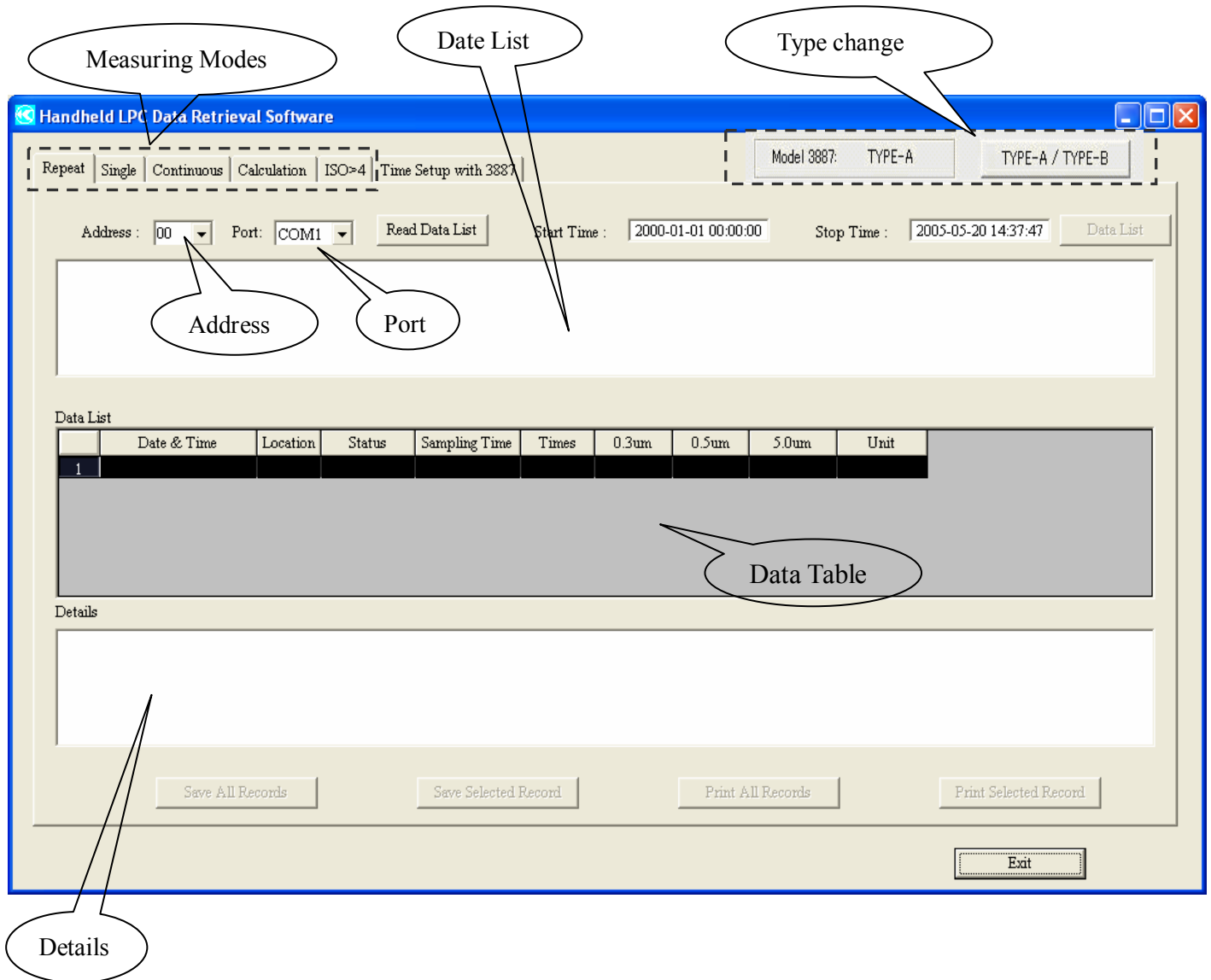
Fig. 2-5

3. Operation

3.1 Program Startup

To start the program, select: [Start] → [All Programs] → [KANOMAX] → [Handheld LPC Retrieval Software]. The program will start on clicking the [Handheld LPC Retrieval Software].

< Start-up Menu >



| Item | Range |
|--------------------|--------------|
| Instrument Address | 00 to 99 |
| COM Port | COM1 to COM8 |

3.2 Transferring Data from the Handheld LPC

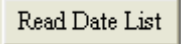
Data stored in the Handheld LPC can be transferred to the computer by the following procedures.

1) Select the measurement mode of the data to be transferred.

Measurement Modes: REPEAT, SINGLE, CONTINUOUS, CALCULATION, ISO>4

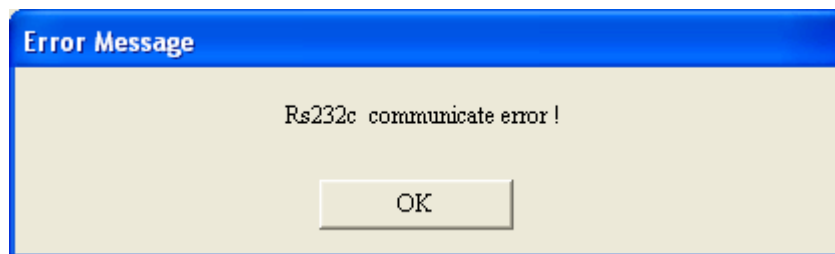
2) Set the instrument Address to match the ID number set for the Handheld LPC.

3) Set the computer Port number.

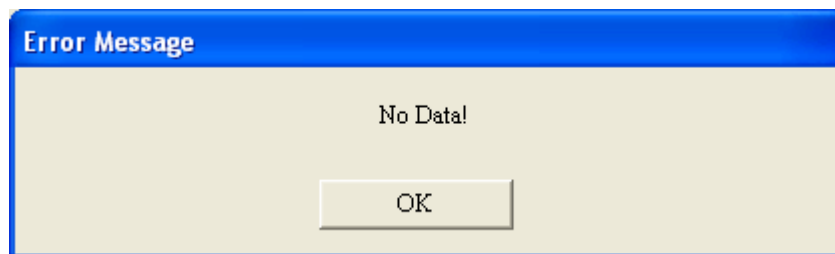
4) Click the  to read in and display the data stored in the Handheld LPC on the Data List section.

Error Messages:

When having a communication error, the following message will be displayed. (Confirm the instrument and cable connections.)

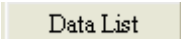


When there is no data stored in the Handheld LPC, the following message will be displayed.



5) Input the Start Time and Stop Time.

- Direct input, or
- Click the Sampling Time displayed in the Data List.

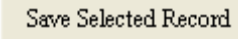
6) When the time range of the sampling data is set, click  button.


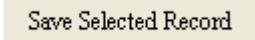
Read in data will be displayed on the Data Table section.

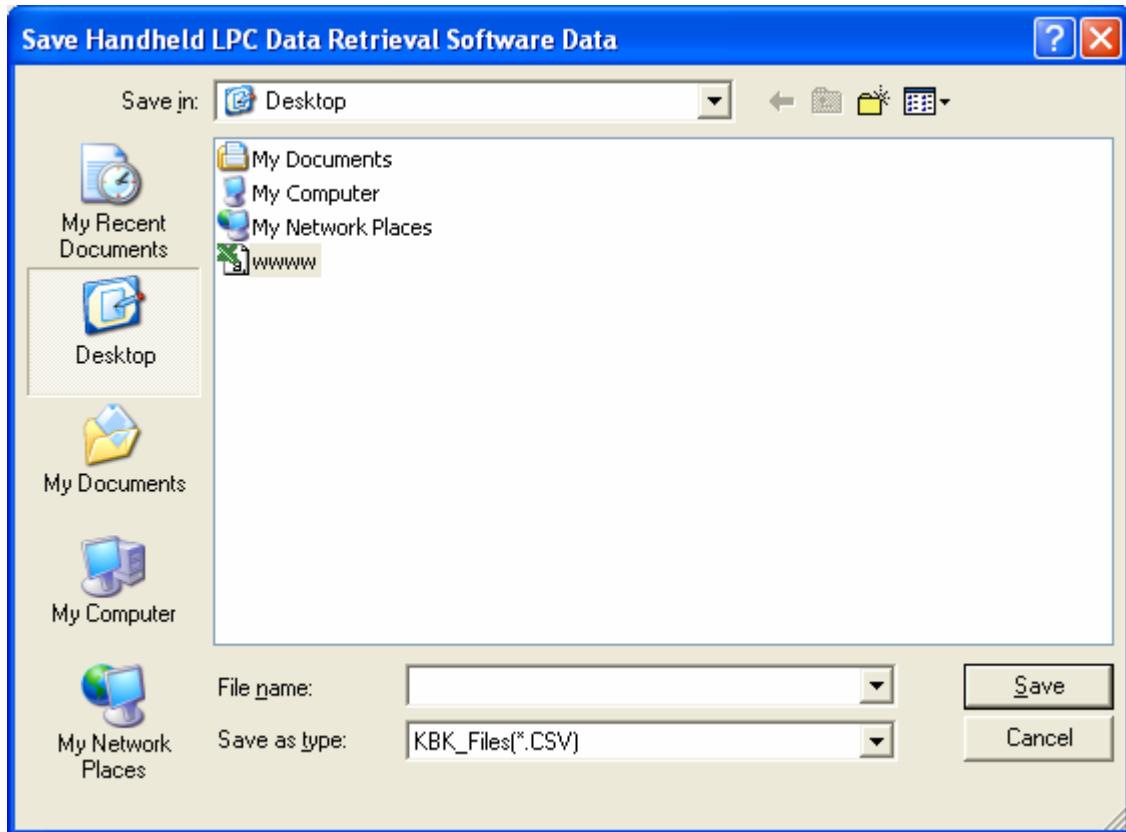
7) By clicking the data number on the Data Table, details of the relevant data will be displayed.

3.3 Saving Data

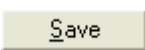
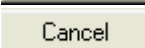
To save all data, click: 

To save selected data, click the data number of the desired data, and click: 

When either  or  is clicked, the following window will be displayed for saving the data.



Note: File type “CSV” must be selected.

| | |
|---|---|
|  | : To save the data file. |
|  | : To exit without saving the data file. |

The following is an example of an Excel sheet, which is displayed when the saved data is opened.

The screenshot shows a Microsoft Excel window titled 'Microsoft Excel - www'. The menu bar includes File, Edit, View, Insert, Format, Tools, Data, Window, and Help. The toolbar shows various icons for file operations and formatting. The active cell is A1, and the formula bar displays 'Handheld LPC Data Retrieval Software'. The data table is as follows:

| | A | B | C | D | E | F | G | H | I |
|----|--------------------------------------|----------|--------|----------|-------|----------|----------|----------|------|
| 1 | Handheld LPC Data Retrieval Software | | | | | | | | |
| 2 | Mode: Repeat | | | | | | | | |
| 3 | Start Time:2005-05-19 10:05:44 | | | | | | | | |
| 4 | End Time:2005-05-19 11:04:10 | | | | | | | | |
| 5 | | | | | | | | | |
| 6 | Date & Time | Location | Status | Sampling | Times | 0.3um | 0.5um | 5.0um | Unit |
| 7 | 5/19/2005 10:05 | 1 | OK | 5 | 0 | 1.52E+06 | 6.51E+05 | 7.20E+02 | /cf |
| 8 | 5/19/2005 10:05 | 1 | OK | 5 | 1 | 1.49E+06 | 6.27E+05 | 2.40E+02 | /cf |
| 9 | 5/19/2005 10:06 | 1 | OK | 5 | 0 | 1.49E+06 | 6.12E+05 | 1.20E+03 | /cf |
| 10 | 5/19/2005 10:06 | 1 | OK | 5 | 1 | 1.51E+06 | 6.30E+05 | 1.44E+03 | /cf |
| 11 | 5/19/2005 10:06 | 1 | OK | 5 | 0 | 1.50E+06 | 6.28E+05 | 7.20E+02 | /cf |
| 12 | 5/19/2005 10:06 | 1 | OK | 5 | 1 | 1.51E+06 | 6.27E+05 | 3.60E+02 | /cf |
| 13 | 5/19/2005 10:07 | 1 | OK | 5 | 0 | 1.49E+06 | 6.25E+05 | 7.20E+02 | /cf |
| 14 | 5/19/2005 10:07 | 1 | OK | 5 | 1 | 1.50E+06 | 6.17E+05 | 1.08E+03 | /cf |
| 15 | 5/19/2005 10:57 | 1 | OK | 5 | 0 | 1.51E+06 | 7.18E+05 | 7.20E+02 | /cf |
| 16 | 5/19/2005 10:58 | 1 | OK | 5 | 1 | 1.50E+06 | 7.08E+05 | 9.60E+02 | /cf |
| 17 | 5/19/2005 10:58 | 1 | OK | 5 | 0 | 1.51E+06 | 7.05E+05 | 6.00E+02 | /cf |
| 18 | 5/19/2005 10:58 | 1 | OK | 5 | 1 | 1.49E+06 | 7.09E+05 | 1.20E+03 | /cf |
| 19 | 5/19/2005 10:58 | 1 | OK | 5 | 0 | 1.52E+06 | 7.12E+05 | 6.00E+02 | /cf |
| 20 | 5/19/2005 10:58 | 1 | OK | 5 | 1 | 1.52E+06 | 7.06E+05 | 3.60E+02 | /cf |
| 21 | 5/19/2005 10:59 | 1 | OK | 5 | 0 | 1.47E+06 | 7.03E+05 | 1.08E+03 | /cf |
| 22 | 5/19/2005 10:59 | 1 | OK | 5 | 1 | 1.49E+06 | 6.98E+05 | 8.40E+02 | /cf |
| 23 | 5/19/2005 10:59 | 1 | OK | 5 | 0 | 1.50E+06 | 7.10E+05 | 7.20E+02 | /cf |
| 24 | 5/19/2005 10:59 | 1 | OK | 5 | 1 | 1.46E+06 | 6.92E+05 | 8.40E+02 | /cf |
| 25 | 5/19/2005 11:03 | 1 | OK | 5 | 0 | 1.51E+06 | 7.05E+05 | 1.32E+03 | /cf |
| 26 | 5/19/2005 11:03 | 1 | OK | 5 | 1 | 1.49E+06 | 6.87E+05 | 1.44E+03 | /cf |
| 27 | 5/19/2005 11:03 | 1 | OK | 5 | 0 | 1.48E+06 | 6.84E+05 | 1.32E+03 | /cf |
| 28 | 5/19/2005 11:03 | 1 | OK | 5 | 1 | 1.49E+06 | 6.75E+05 | 1.68E+03 | /cf |
| 29 | 5/19/2005 11:04 | 1 | OK | 5 | 0 | 1.48E+06 | 6.89E+05 | 1.08E+03 | /cf |

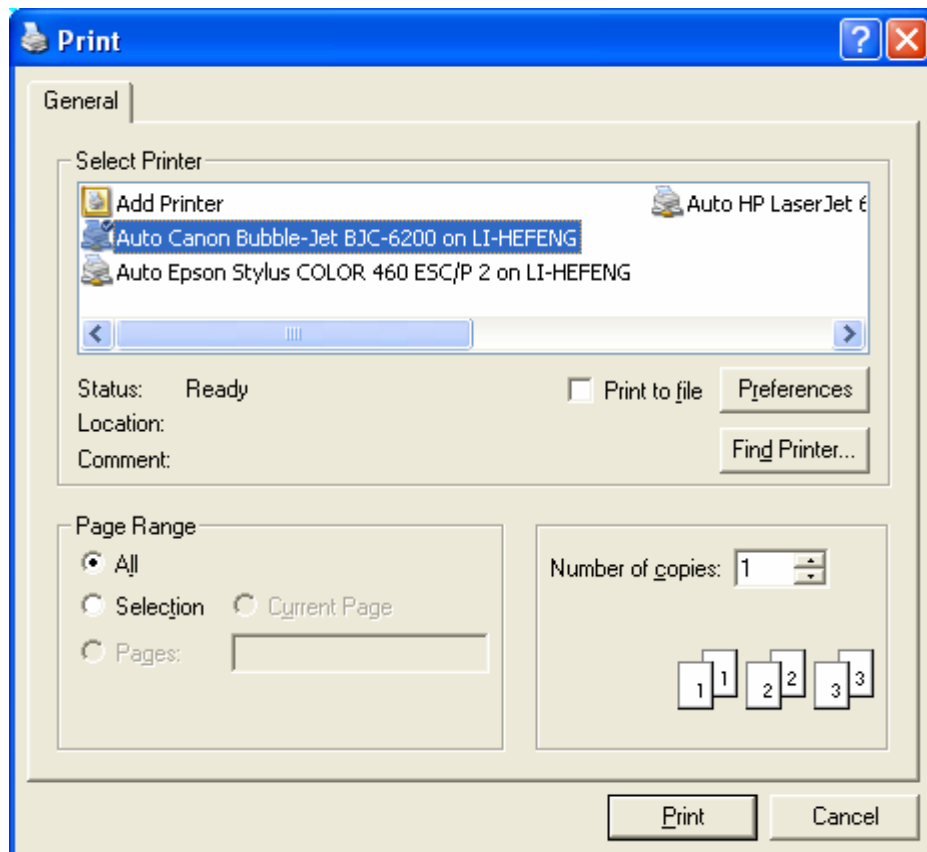
The status bar at the bottom shows 'Ready' and 'NUM SCRL'.

3.4 Printing Data

To print all data, click: **Print All Record**

To print selected data, click the data number of the desired data, and click: **Print Selected Record**

When either **Print All Record** or **Print Selected Record** is clicked, the following window will be displayed for printing the data.



Print : To print a data file.
Cancel : To exit without printing a data file.

3.5 Setting Time/Date of the Handheld LPC

Click the “Time Setup with 3887” tab to display the following dialog box.

Handheld LPC Data Retrieval Software

Repeat Single Continuous Calculation ISO>4 Time Setup with 3887 Model 3887: TYPE-A TYPE-A / TYPE-B

Address : 00 Port: COM1

Read Time

Date : Time :

Read Time

Set Time

Date : 5 /20/2005 Time : 2 :37:47 PM

Set Time

Exit

To read in the date/time of the Handheld LPC, click:

To set the date/time of the Handheld LPC, input the data/time, and click:

3.6 A change of an Handheld LPC type



It is written on the back of the main body of Handheld LPC whether it is "A-Type" or "B-TYPE".

As for the initial setting of this software, it is typed "A".

I set it with this change button, and, in the case of "B" type use, please use it.



To set the Type of the Handheld LPC, select the Type, and click:[OK]

3.7 Closing the Software Program

Click the  button to close the software program.

4. Warranty and After Service

Warranty

- A warranty card is not included in this product.
- The instrument (excluding consumables such as batteries) is warranted against defects in materials and workmanship under normal use for a period of one year from the date of original purchase.

After Service

- When you have a problem with your unit, please check out the “Troubleshooting” section first.
- If that does not help, please contact your local distributor, or call our service center (See last page for contact information).
- During the warranty period, we will repair at no charge a product that proves to be defective due to material or workmanship under normal use. The limited warranty covers all defects encountered in normal use of the product, and does not apply in cases such as; loss or damage to the product due to abuse, mishandling, or alternation by the customer, or natural disaster. All return shipping charges are the responsibility of the customer.
- Repair after warranty expiration:
Upon request, we will repair the instrument at the customer’s expense, if the instrument’s performance is found to be recoverable by providing the repair.
- Replacement parts are available for a minimum period of five (5) years after termination of production. This storage period of replacement parts is considered as the period during which we can provide repair service. For further information, please contact our service center.

When making an inquiry, please provide the following information.

- * Product Name: Handheld Laser Particle Counter
- * Model Number: 3887
- * Serial Number: xxxxxx
- * Date of Purchase: Day, Month and Year
- * Description of Symptom in Detail: